



1940 BROOKVIEW, SALINE

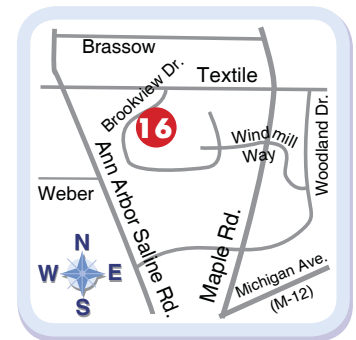
BROOKVIEW HIGHLANDS

LODI TOWNSHIP

Welcome to the 6th Showcase of Homes entry from Gabrian. This custom home features spectacular walnut study, cherry doors, custom trim and paint finishes you have come to expect from over 100 custom homes built by Gabrian. The grand foyer with dual cherry circular staircase, custom iron railing leads into 11,000 sq ft of exceptional quality and craftsmanship.

This extraordinary home features 6 bedrooms, 6.5 baths, 2 full kitchens, unique 800 bottle, clay tile and stone wine cellar, 5 full masonry fireplaces by Giddings Masonry. Dream outdoor entertaining area with built-in grille, fireplace, plasma TV surrounded with landscaping by My Gardner. The state of the art heating and cooling systems with variable speed furnaces, AC units and heated floors, controlled by 12 zoned thermostats, indoor and outdoor humidity monitors, integrated into the home automation system by Paragon Sight and Sound.

The kitchen features Medallion cabinets, Venetian granite, heated limestone floors, Subzero and Wolf appliances.



BUILDER INFORMATION

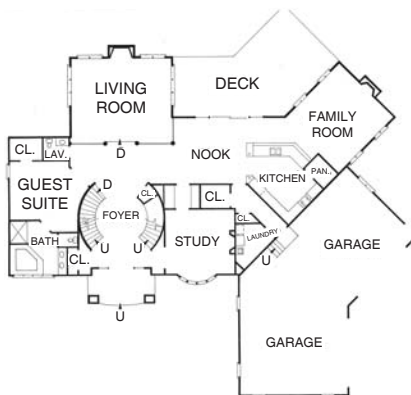
gabriel@gabrianconstruction.com

Phone: (734) 544-3470

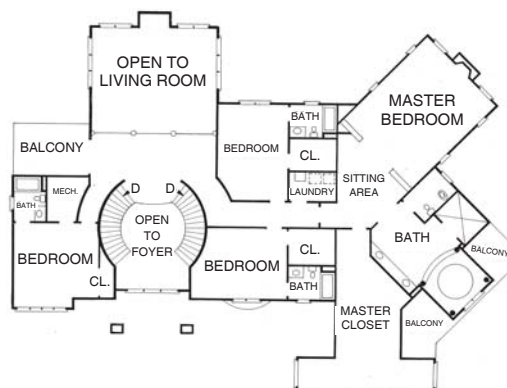
Sales: (734) 544-4380

Fax: (734) 544-3475

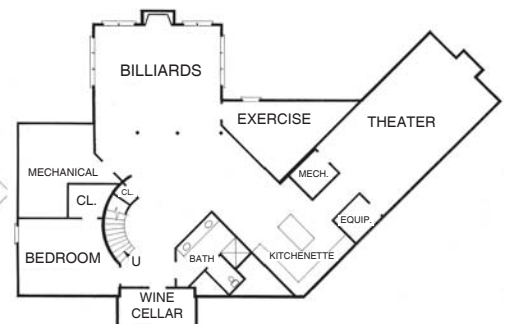
www.gabrianconstruction.com



FIRST FLOOR PLAN



SECOND FLOOR PLAN



LOWER LEVEL PLAN