

KLA Development

9



242 Barton North Drive, Ann Arbor Township: Ann Arbor Subdivision: Barton Hills Village

This is an elegant but comfortable Pennsylvania Dutch style home set quietly back from the street amongst a lovely landscaped yard in Barton Hills. Built in the 70's, the original home has been renovated and enlarged to encompass a first floor master bedroom suite, large kitchen, office and mud room/laundry.

Kelly Anderson; KLA Development, builder and Garnet Johnson of Garnet Johnson & Assoc. Ltd.; designer and cabinet makers, bring their special magic to create space that is uniquely the Owner's. Every inch of this home greets the visitor with their special style and warmth; wide plank floors, large windows, custom built kitchen and butler's pantry, a large stone and timber master suite fireplace and large trims.

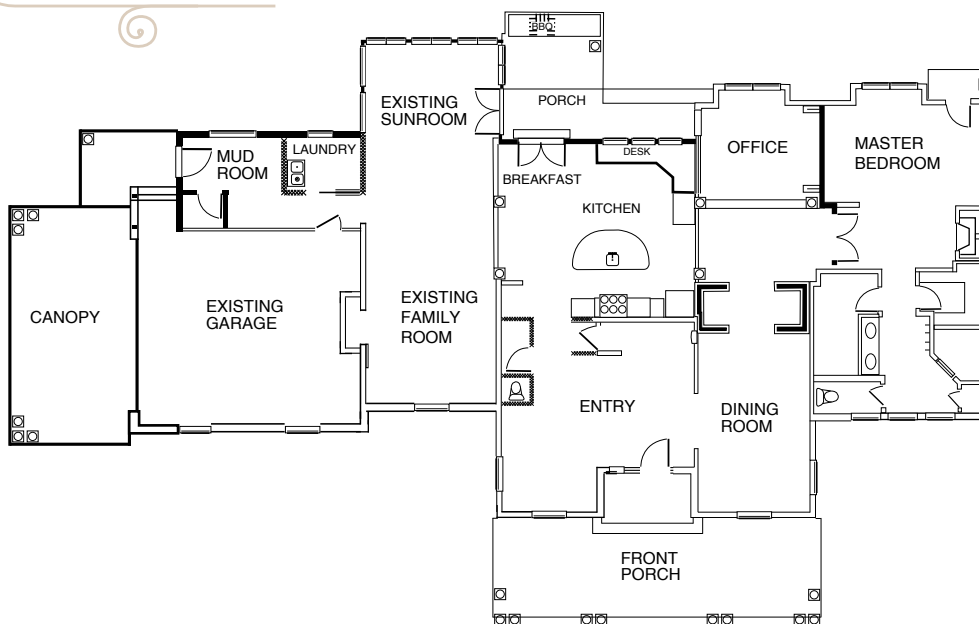
KLA's goal is always to renovate or build her projects in a timely manner, on budget with excellent quality and design. This is another example of her success.



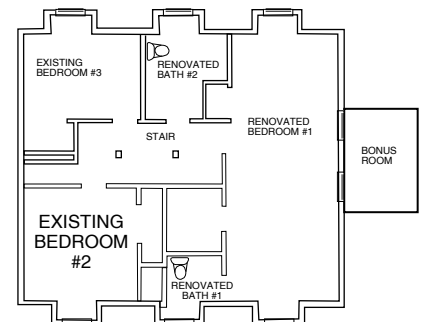
Contact Information

Kelly Anderson
 495 N. Wagner Road
 Ann Arbor, MI 48103
 Office: (734) 669-8565
 Email: kladev@msn.com

Floor Plan



FIRST FLOOR PLAN



SECOND FLOOR PLAN