

## 6140 First Street, Ypsilanti Township: Superior

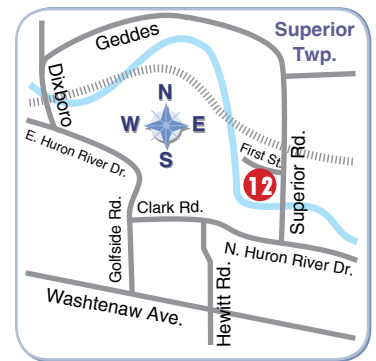
The 7,200 sq. ft. “Swan House” is nestled along 300 feet of the scenic Huron River just 85 feet from the house. A protected, wooded shore across the river provides a private, relaxing setting. Yet, this home is only 5 miles from downtown Ann Arbor.

The contemporary designed International style home blends wood and water, giving one the sense of being outside when you’re actually inside looking out.

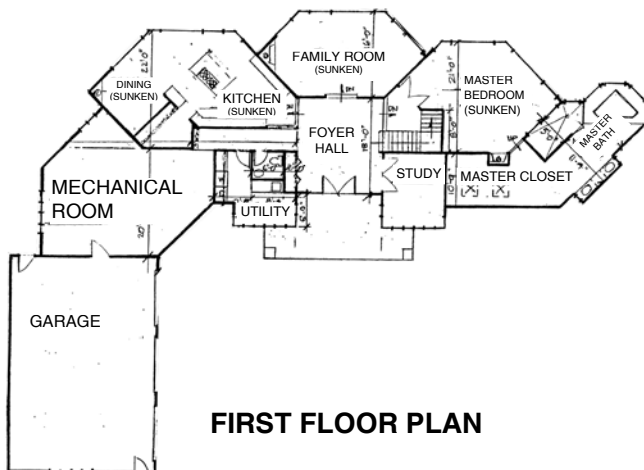
This unique home includes His and Hers first and second floor master bedroom suites – one with partial stone walls and one with partial slate walls with glass walls overlooking the water. Two Jacuzzis, hidden water closets, and large glass ‘Surround Water’ stone showers.

The sunken country kitchen has partial stone walls and Whiskey Black Cherry cabinets with Black Galaxy granite countertops, double oven island, state of the art appliances, and a large walk in glass door pantry.

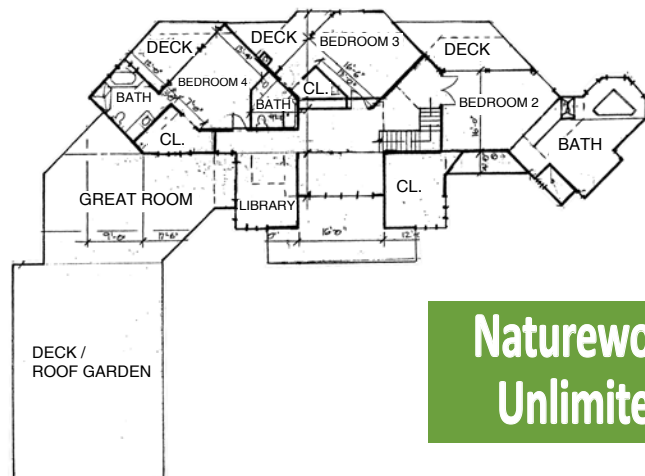
**This home is available for sale.**



### Floor Plan



**FIRST FLOOR PLAN**



**SECOND FLOOR PLAN**



#### Contact Information

Ypsilanti, MI 48197  
Office: (734) 434-5599

Email: [naturewoodinc@yahoo.com](mailto:naturewoodinc@yahoo.com)